

Flange Weld Testers

Technical documentation



Purge, Weld & Test Flange Connections with the same tool.

- Fast & Easy Installation & Testing
- Faster Pipe Repairs & Retrofits*
- Reduces NDE
- Minimal Water Use, Less Handling & Waste
- Minimum 1.5 : 1 Safety Factor
- Center Port for Upstream Monitoring

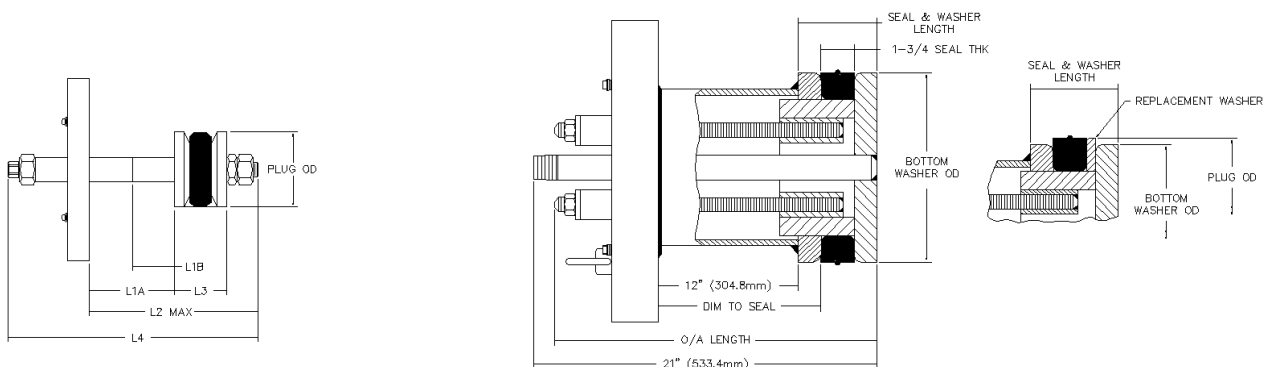
Maximum Test Pressures

150 ANSI Flange Class - 450 psi
(30.9 Bar)

300 ANSI Flange Class 0 1,125 psi (77.2 Bar)

600+ ANSI Flange Class - 1.125* psi (77.2* Bar)

* Consult Patriot International for higher pressure ratings



Integrated Solutions to Piping Problems | www.patriot-int.com

The Netherlands

Dordrecht

T: +31 (0) 78 652 41 11

E: info@patriot-int.com

United Kingdom

Aberdeen

T: +44 (0) 1224 724726

E: info@patriot-int.com

Belgium

Antwerp

T: +32 (0)36 00 17 07

E: info@patriot-int.com



Flange Size	Pipe Sched	Seal to Pipe Clearance ins (mm)	Vetn & Fill Port NPT size	L1-A ins (mm)	L1-B ins (mm)	L2 ins (mm)	L3 ins (mm)	L4 ins (mm)	Shipping Weight in Kg 150 # Rating	Shipping Weight in Kg 300 # Rating
3/4" DN20	80 40	0.07 (1.8) 0.07 (1.8)	1/8" F	12 (304.8)	3 (76.2)	14 1/4 (362.0)	1 1/4 (31.8)	24 11/16 (627.1)	3.62	4.08
1" DN25	80 40	0.11 (2.8) 0.11 (2.8)	1/8" F	12 (304.8)	3 (76.2)	14 1/4 (362.0)	1 1/4 (31.8)	24 11/16 (627.1)	4.08	4.98
1 1/4" DN32	80 40	0.13 (3.3) 0.13 (3.3)	1/8" F	12 (304.8)	3 1/8" (79.4)	15 (381.2)	1 5/8 (41.3)	20 3/8 (517.5)	4.53	5.89
1 1/2" DN40	80 40	0.17 (4.3) 0.17 (4.3)	1/4" F	12 (304.8)	3 1/8" (79.4)	15 1/8 (384.2)	1 3/4 (44.5)	20 3/8 (517.5)	4.98	6.80
2" DN50	80 40	0.25 (6.4) 0.25 (6.4)	1/4" F	12 (304.8)	3 1/8" (79.4)	15 1/8 (384.2)	1 3/4 (44.5)	20 3/8 (517.5)	6.34	8.16
2 1/2" DN65	80 40	0.25 (6.4) 0.25 (6.4)	1/4" F	12 (304.8)	6 (152.4)	17 1/8 (435.0)	2 (50.8)	22 3/8 (568.3)	9.06	11.33
3" DN80	80 40	0.38 (9.7) 0.38 (9.7)	3/4" F	12 (304.8)	6 (152.4)	17 1/8 (435.0)	2 (50.8)	22 3/8 (568.3)	11.78	14.95
4" DN100	80 40	0.44 (11.2) 0.44 (11.2)	3/4" F	12 (304.8)	6 (152.4)	17 1/8 (435.0)	2 (50.8)	22 3/8 (568.3)	14.50	19.48
6" DN150	80 40	0.50 (12.7) 0.50 (12.7)	3/4" F	12 (304.8)	6 (152.4)	20 1/2 (520.7)	3 3/4 (95.3)	28 (711.2)	31.72	41.23
8" DN200	80 40	0.50 (12.7) 0.50 (12.7)	3/4" F	12 (304.8)	6 (152.4)	20 3/4 (527.1)	4 (101.6)	28 (711.2)	66.15	80.65

Flange Size	ANSI Flange Class	Pipe Schedule	Bottom Washer O.D. (inches (mm))	Plug O.D. (inches (mm))	Shaft Qty	Dimension to Seal (inches (mm))	Overall Length (inches (mm))	Seal / Washer Length (inches (mm))	Seal O-Ring Dash Number	Shipping Weight 150# (lbs (kg))	Shipping Weight 300# (lbs (kg))
10" DN250	150 - 300	80 60 / XS 40 / STD	8.81 (223.8)	9.06 (230.1) 9.25 (235.0) 9.52 (241.8)	4	12 1/2 (317.5)	20 11/16 (525.5)	4 (101.6) 4 (101.6) 4 (101.6)	-446 -446 -447	175 (79.3)	230 (104.2)
12" DN300	150 - 300	80 XS 40 / STD	10.87 (276.1)	10.87 (276.1) 11.25 (285.8) 11.50 (292.1)	4	12 1/2 (317.5)	20 11/16 (525.5)	3/12 (88.9) 4 (101.6) 4 (101.6)	-499 -450 -451	212 (96.1)	332 (150.4)
14" DN350	150 - 300	80 XS 40 30 / STD	11.00 (279.4)	12.00 (304.8) 12.50 (317.5) 12.62 (320.5) 12.75 (323.9)	6	12 1/2 (317.5)	20 15/16 (531.8)	4 3/8 (111.1) 4 3/8 (111.1) 4 3/8 (111.1) 4 3/8 (111.1)	N/A	296 (134.1)	386 (174.9)
16" DN400	150 - 300	80 40 / XS 30 / STD	13.06 (331.7)	13.81 (350.8) 14.50 (368.3) 14.75 (374.7)	8	12 1/2 (317.5)	20 15/16 (531.8)	4 3/8 (111.1) 4 3/8 (111.1) 4 3/8 (111.1)	N/A	397 (179.9)	528 (239.2)
18" DN450	150 - 300	80 40 XS STD	14.75 (374.7)	15.62 (396.7) 16.38 (416.1) 16.50 (419.1) 16.75 (425.5)	8	12 1/2 (317.5)	20 11/16 (525.5)	4 5/8 (117.5) 4 5/8 (117.5) 4 5/8 (117.5) 4 5/8 (117.5)	N/A	497 (225.2)	656 (297.2)
20" DN500	150 - 300	80 40 30 / XS 20 / STD	16.94 (430.3)	17.44 (443.0) 18.31 (465.1) 18.50 (469.9) 18.75 (476.3)	10	12 1/2 (317.5)	20 11/16 (525.5)	4 3/8 (111.1) 4 3/8 (111.1) 4 3/8 (111.1) 4 3/8 (111.1)	N/A	640 (290.0)	870 (394.2)
24" DN600	150 - 300	80 40 XS 20 / STD	19.88 (505.0)	21.06 (534.9) 22.12 (561.8) 22.50 (571.5) 22.75 (577.9)	12	12 3/4 (323.9)	20 15/16 (531.8)	4 3/4 (120.7) 4 3/4 (120.7) 4 3/4 (120.7) 4 3/4 (120.7)	N/A	932 (422.3)	1255 (568.6)

Integrated Solutions to Piping Problems | www.patriot-int.com

The Netherlands

Dordrecht

T: +31 (0) 78 652 41 11

E: info@patriot-int.com

United Kingdom

Aberdeen

T: +44 (0) 1224 724726

E: info@patriot-int.com

Belgium

Antwerp

T: +32 (0)36 00 17 07

E: info@patriot-int.com

